

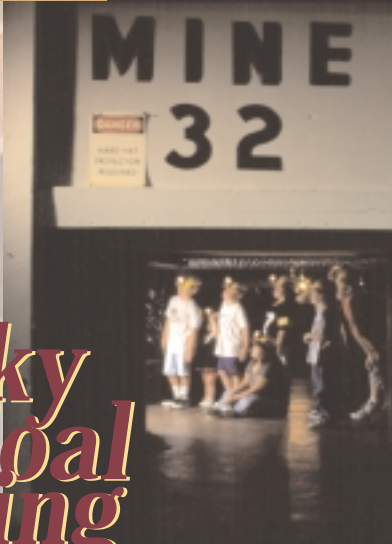


Southwest Education Foundation
700 College Road
Cumberland, Kentucky 40823

Managed by Southwest Education Foundation
in support of Southwest Community College



Kentucky Coal Mining Museum



Kentucky Coal Mining Museum
606.848.1530

Bulk Rate
U.S. Postage
Paid
Permit No. 1
Lexington, KY

Kingdom Come Scenic Parkway





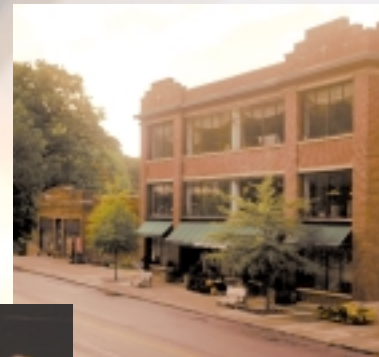
Special Features

The Loretta Lynn Exhibit

The third floor of the museum is dedicated to the life of country music singer and Coal Miner's Daughter Loretta Lynn. The Lynn Exhibit includes portraits capturing the singer at various stages of her life in addition to many items from Mrs. Lynn's personal collection.

Kentucky Coal Mining Museum

The Kentucky Coal Mining Museum brings back to life one of the most unique and interesting aspects of early coal mining – the company store. Housed in the old commissary built by International Harvester in the 1920s, the museum features four stories of exhibits on the history of mining and the life of the coal miner. Visitors can enjoy a step back in time to the coal miner's workplace, his home and his community. Artifacts, antiques, photographs, and machinery make up the more than 30 exhibits.



Educational Opportunities

The Kentucky Coal Mining Museum is managed by the Southeast Education Foundation, Inc., a non-profit organization devoted to supporting the educational mission of Southeast Community College. As part of that mission, the college is developing a degree program in museum management, which will include internships at the Coal Museum. The facility currently serves as the site for several educational projects in collaboration with the college and regional school systems.

Mock Mine

Children and adults alike enjoy a tour through the Museum's Mock Mine. The short walking tour winds along coal corridors and includes vivid sound and video from modern mines.

Kentucky Coal Mining Museum



Portal #31 Underground Mine Tour

Slated to open in 2001, the Portal #31 Underground Mine Tour will offer visitors the unique experience of touring an actual coal mine by rail car. Visitors will adorn the traditional protective gear of the coal miner as they enjoy animated exhibits along the tour. Outside Portal #31 stands a black granite monument in tribute to long time president of the United Mine Workers John L. Lewis and a memorial to U.S. Steel District #1 miners who died in mining accidents. The site also features a 1920s lamphouse, bathhouse, L&N train depot and loadout system.

